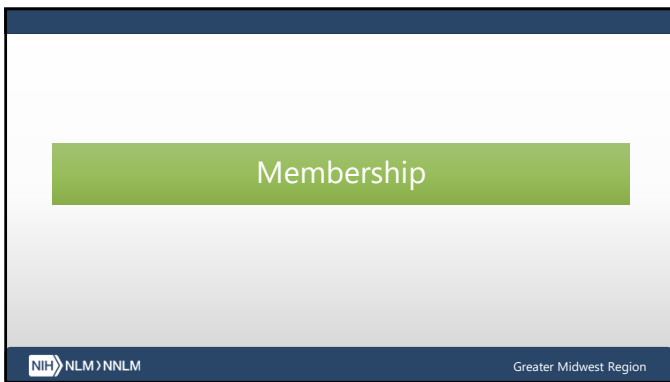




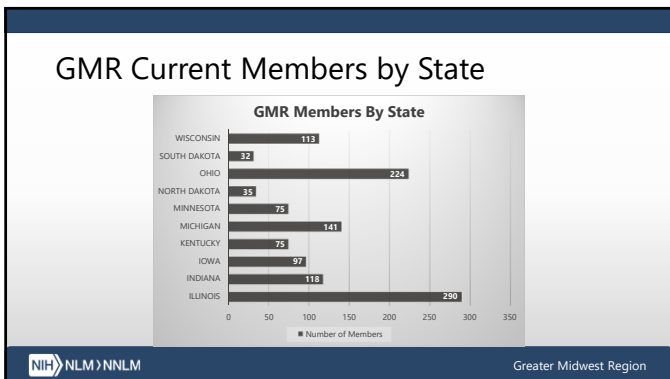
*GMR Update
HSLI
27 September 2018
Jacqueline Leskovec, MLIS, MA, RN*

NIH NLM NNLM Greater Midwest Region



Membership

NIH NLM NNLM Greater Midwest Region



GMR Current Members by State

GMR Members By State

| State | Number of Members |
|--------------|-------------------|
| WISCONSIN | 113 |
| SOUTH DAKOTA | 32 |
| OHIO | 224 |
| NORTH DAKOTA | 35 |
| MINNESOTA | 75 |
| MICHIGAN | 141 |
| KENTUCKY | 75 |
| IOWA | 97 |
| INDIANA | 118 |
| ILLINOIS | 250 |

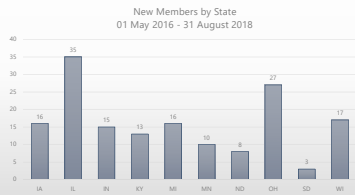
NIH NLM NNLM Greater Midwest Region

1200 NNLM GMR Network Members

- 163 GMR Members added since the start of this grant period (01 May 2016)
- 35 from Illinois
 - 3 academic
 - 3 association
 - 23 public library
 - 4 community based
 - 2 public health orgs



New Members by State through 31 August



NNLM Initiatives

NNLM *All of Us* National Program (CEN)

Community Engagement Network (CEN)

- Community engagement
- Build capacity of public library staff to provide health information
- Support public library programming
- Providing *All of Us* Research Program awareness

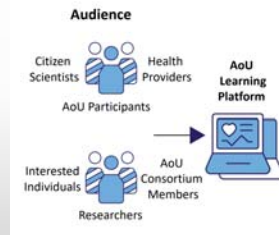


<https://nnlm.gov/all-of-us>

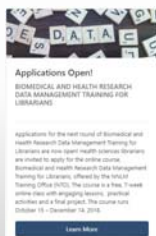
NNLM *All of Us* National Program (TEC)

Training and Education Center (TEC)

- Community Education
 - AoU participants
 - Health providers
 - Researchers
 - Interested members of the public (including citizen scientists)



RD3: Resources for Data Driven Discovery



- Applications open for data management training course
- Two new courses under development:
 - RDM 101
 - RDM 102

NNLM Public Libraries

What have we done?

- *Promoting Healthy Communities* initiative with PLA
- Development of *Stand Up for Health*
- Libraries Transform statements
- Public library staff assessment
- Preconference at ARSL (GMR)

What's next?

- Preconference at ALA Midwinter (PNR)
- Presentations at ALA 2019 (All)
- *Stand Up for Health* workshops (GMR)
- GMR ideas submitted to PLA:
 - Regional symposium
 - Train-the-trainer

Greater Midwest Region

Opioids?

NNLM

Environmental Health & Toxicology

Opiate Addiction and Treatment (Enviro-Health Links)

- Understanding Addiction
- Opioid Overdose
- Opioid Drugs
- Medications to Treat Opioid Addiction
- Opioid Prescribing
- Pregnancy, Opioid Use, and Neonatal Abstinence Syndrome
- Recovery
- Data, Trends, & Statistics
- Topic-related Searches of National Library of Medicine Resources
- Disclaimer

Greater Midwest Region

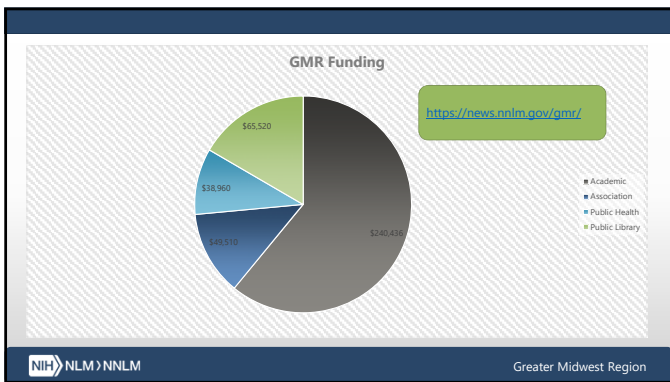
NNLM Wikipedia Fall Edit-a-thon

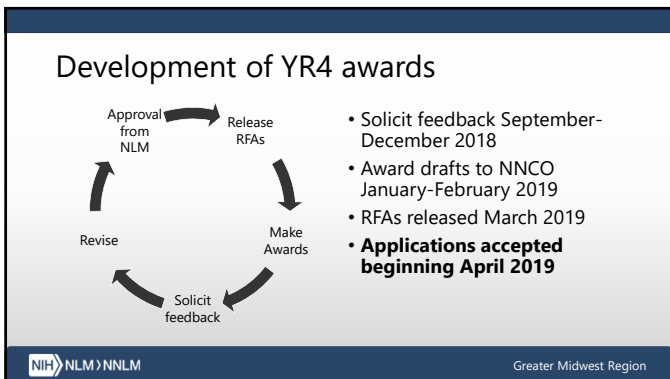
- October 3, 2PM to 2:30PM ET
 - Introduction to the NNLM Edit-a-thon and WikiProject Medicine
- October 17, 2PM to 2:30PM ET
 - Editing Wikipedia Articles
- October 31, 2PM to 2:30PM ET
 - Women's Health Resources
- https://en.wikipedia.org/wiki/Wikipedia:WikiProject_Medicine/National_Network_of_Libraries_of_Medicine
- To Register: https://nnlm.gov/class/wiki_training

Greater Midwest Region

Funding

NIH NLM NNLM Greater Midwest Region





Education

NIH NLM NNLM Greater Midwest Region

Supporting Diverse Communities released

Serving Diverse Communities: Accessing Health Information in Multiple Languages

Class Details

Class Overview

NIH NLM NNLM Greater Midwest Region

Stand Up for Health workshops

- Preconference at Association for Rural & Small Libraries (ARSL)
- Presentation with Illinois State Library in November
- Presentations (x3) with Indiana State Library in mid-March


NIH NLM NNLM Greater Midwest Region

GMR offerings (second quarter)

| | |
|---|--|
| <p>In Person</p> <ul style="list-style-type: none"> • Midwest Chapter programming <ul style="list-style-type: none"> • Precision Medicine • Open Science • Beyond Our Borders (ILA) • Stronger Together (Internet Librarian) | <p>Online</p> <ul style="list-style-type: none"> • Kernel of Knowledge <ul style="list-style-type: none"> • CLUES workshop • Catherine Arnott-Smith • NNLM Journal Club • Getting Started with Outreach in Your Community • Stand Up for Health (x2) |
|---|--|


NIH NLM NNLM Greater Midwest Region

What do you want to know?



NIH NLM NNLM Greater Midwest Region

How to Get a User Account



<https://nmlm.gov/gmr>

NIH NLM NNLM Greater Midwest Region

Connecting with the Region

NIH NLM NNLN Greater Midwest Region

Advisory Teams & Work Groups

- Health Sciences Librarians
- Health Professionals
- Public Libraries
- Community College
- Communications
- Disaster Health Information Coordinators
- Medically Underserved Areas (MUA)
- Technology

NIH NLM NNLN Greater Midwest Region

Partnering for Activities

- Lincoln Library Staff Institute Training in Springfield, IL
- Promoted NLM resources at Health Literacy and Careers in Health Sciences information session in Canton and Quincy, IL
- Stand Up for Health ARSL pre-conference
- Exhibiting:
 - ILA Peoria
 - ARSL Springfield
 - HSLI (Thank you UIC Peoria!)

NIH NLM NNLN Greater Midwest Region

Two Designations

Resource Library

- Provide interlibrary loans through DOCLINE at a set rate
- Provide document delivery to unaffiliated health professionals
- Serve as a stakeholder group

Partner Outreach Library

- Conduct outreach on behalf of GMR
- Identify outreach opportunities within state

NIH NLM NNLM Greater Midwest Region

POLs Illinois

- Southern Illinois University
- Springfield, IL
- Lydia Howes



- UIC – Peoria
- Peoria, IL
- Carmen Howard





NIH NLM NNLM Greater Midwest Region

Communications

- Hardin Library for the Health Sciences
- nnlm.gov/gmr
- 319-353-4479 Iowa City
• 773-828-4479 Chicago
- GMRLIST

- Midwest Matters
- Visit us on Facebook 
- Visit us on Twitter 
- gmr-lib@uiowa.edu
- Stay tuned for a new mail service coming your way!

NIH NLM NNLM Greater Midwest Region

Thank You!

This project has been funded in whole or in part with Federal funds from the National Library of Medicine, National Institutes of Health, Department of Health and Human Services, under Grant Number 1UG4LM012346 with The University of Iowa.

NIH NLM NNLM Greater Midwest Region
