

HSLI Newsletter

Volume 11 Number 2

June 1991

RECEIVED
JUL -1 1991
SIU SCHOOL OF
MEDICINE LIBRARY

MESSAGE FROM THE PRESIDENT

It has been stated that "health science libraries are not islands unto themselves." They should mirror the philosophy, mission, and economy of their parent institutions, which, in turn, are affected by environmental changes.

Whether a library is part of a community hospital or an academic medical center, its collection is unique in its scope reflecting the character and programs of its institution. Its services should be tailored to meet the specific needs of its user population.

Evaluation of existing programs should be ongoing to assure that they provide the needed informational support for the medical faculty and hospital staffs and new services where needed should be employed.

Benefits of library information services should include "improved efficiency in obtaining essential information, improved patient care, informed decision-making, staff retention, and services to patients and community."

I hope that all of you have an enjoyable summer.

HSLI
Health
Science
Librarians
of
Illinois



HSLI 1991 SPRING MEETING IN ROCKFORD

A big thank you to the Spring 1991 Committee for a job well done!!!

The Spring HSLI conference had 72 attendees during the two-day meeting. The CE sessions were very well attended as was the management program given by Logan Ludwig on Friday morning.

Attendees liked the facilities at the Clock Tower and enjoyed the opportunity to mix informally in the hospitality suite throughout the two-day meeting. Tulips brightened the luncheon tables and the hospitality suite.

Donations of \$1575 were received from sponsors of the meeting. Of special note were a \$500 donation from Upjohn and a \$400 check donated by Rockford Memorial Hospital in recognition of their medical librarian's contribution to HSLI and her current presidency of this organization.

The surprise and unexpected visit by Florence Nightingale (Suzanne Wang-Rockford Memorial Hospital) was a treat and her presentation in full costume was quite informative and very interesting.

To remember Rockford and the Spring meeting, each attendee left with a tulip memo clip board for their office desk.

Thanks again to this hard-working committee:

Phyllis Nathan, President 1991 & Program
Committee Chair

Pat Ellison, Local Arrangement Chair

Nancy Dale, Thursday CE-Day Chair

Sharon Montana & Rachel Garza, Registration
Chairs

Pat Vorwald & Mary Schneider, Registration Packets

Joanne Frankena, Publicity

Jan Stilson, Sponsors Chair

Mary Rose Amidjaya & Pat Farney, Decorations

Jeanette Gawronski & Karen Wark, Hospitality Suite

Nancy Olson & Arlene Johnson, Registration

Mary Pat Pryor, Activities in Rockford

Laura Mueller, HSLI Treasurer

The HSLI NEWSLETTER is published by the Health Science Librarians of Illinois. It is published four times per year and is distributed free of charge to members.

PHYLLIS NATHAN, President

RUSSELL IWAMI, Editor
National College of Chiropractic
Learning Resource Center
200 East Roosevelt Road
Lombard IL 60148

(708)268-6616

(708)268-6618 (fax)

Advertising rates are available from the Editor on request. Information for the NEWSLETTER should be submitted to the Editor.

DEADLINES FOR FUTURE ISSUES

August 30, 1991

November 29, 1991

February 28, 1992

May 29, 1992

ADVERTISERS

HSLI gratefully acknowledges the support of the following advertisers:

C. Berger and Company.....p. 9

EBSCO Subscription Services.....p. 10

LEGISLATIVE COMMITTEE - Linda Feinberg, Chair

The **White House Conference on Libraries and Information Services** is fast approaching. July 9-13, 1991 will see 32 delegates from Illinois attending. This includes Kathryn M. Harris from the Illinois State Historical Library, who is the only special librarian from Illinois going. She has even had experience in the medical library field. She has asked for comments on the conference topics of Literacy, Democracy and Productivity. Her phone number is 718-785-8945 and address is Illinois State Historical Library, Old State Capitol Plaza, Springfield, IL 62701. *Special Libraries* (Spring 1991, v.82 #2) has devoted half of a special issue to White House Conference papers. You might want to read Ruth Seidman's article entitled "Special Libraries and the White House Conference" (she is president of SLA).

ILA Legislative Day on April 24th was quite an experience for me. After we arrived in Springfield we were briefed by Debby Miller, Consultant for ILA (lobbyist). She informed us (over 200 others attended) about all the bills in the House and Senate waiting action that in some way relate to libraries. Most of these concerned public libraries but some might have relevance to the medical field. We then heard from State Librarian George Ryan, who was able to drop by between other commitments. It was a very active day in the legislature but others who dropped by to speak or just say hello included Senators Sam Vadelabene, John Davidson, Ralph Dunn, Philip Rock, Representative Helen Satterthwaite and Joe Lucco, Aide to Speaker Madigan. After lunch we went in groups to drop by "our" representatives, most of whom were in caucus, but we were able to leave messages with their secretaries along with large "Library Cards" provided by ILA. Touring the new State Library was another highlight. On the way home I had the opportunity to talk to other librarians and Library Trustees from the North Suburban area.

If you need census information try **CENDATA** on DIALOG (file 580). This is the Census Bureau's online database. It already has redistricting data resulting from the 1990 census.

The Illinois State Library



The building is divided by a 40-foot-wide, five-story atrium with three walkways connecting the building's upper floors.

1991 ILLINOIS STATE COUNCIL

Priscilla Swatos, Chair
Consortia Rep. 1989-1991
Illini Hospital Library
801 Hospital Road
Silvis IL 61282-1804
(309)792-4360
FAX (309)792-4362

Linda Feinberg, Assistant Chair
Consortia Rep. 1991-1993
Evanston Hospital
Webster Library
2650 Ridge Avenue
Evanston IL 60201
(708)570-2665; 570-2651
FAX (708)570-2926

Royden Jones, Secretary
Consortia Rep. 1990-1992
Methodist Medical Center
Medical Library
221 NE Glen Oak Avenue
Peoria IL 61636
(309)672-5791
FAX (309)671-5185

Nancy Dale
Consortia Rep. 1989-1991
St. Anthony Medical Center Library
5666 East State Street
Rockford IL 61108
(815)395-5191
FAX (815)395-5551

Trudy Gardner
Non-Aligned Rep. 1991-1993
Library of Rush University
600 South Paulina
Chicago IL 60612-3874
(312)942-2271
FAX (312)942-3143

Gerald Dujsik
Consortia Rep. 1990-1992
Illinois College of Optometry
Learning Resources
3241 South Michigan Avenue
Chicago IL 60616
(312)225-1700, x691
FAX (312)791-1970

Gail Lahti
Consortia Rep. 1991-1993
Palos Community Hospital Library
12251 South 80th Avenue
Palos Heights IL 60463
(708)361-4500, x5096
FAX not available

Janet Mixer
Resource Library Rep. 1991-1993
Loyola University Medical Center
Health Sciences Library
2160 South First Avenue
Maywood IL 60153
(708)216-5305
FAX (708)216-8115

Jeanette Harlow
Non-Aligned Rep. 1990-1992
American Hospital Assn. Resource Center
840 North Lake Shore Drive
Chicago IL 60611
(312)280-6266
FAX (312)280-5979

Sandra Worley
Resource Library Rep. 1990-1992
Chicago College of Osteopathic Medicine
Alumni Library
555 West 31st Street
Downers Grove IL 60515
(708)515-6200
FAX (708)515-6195

Phyllis Nathan
HSLI President 1990-1991
Rockford Memorial Hospital
Health Science Library
2400 North Rockton
Rockford IL 61103
(815)961-6287
FAX (815)968-7007

Suzanne Schiar
Illinois State Library Liaison
300 South Second Street
Springfield IL 62701-1796
(217)785-1532
FAX (217)785-4326

Illinois
State
Council



REPORT FROM THE ILLINOIS STATE COUNCIL

--Submitted by Priscilla Swatos, Chair

At its meeting on April 12, 1991, the Council elected Linda Feinberg as Assistant Chair and Roy Jones as Secretary for 1991. Jeanette Harlow was introduced as the new Non-Aligned Library Representative from the American Hospital Association. Jeanette replaces Pat Pinkowski, who has left the AHA Resource Library to create a new library for the Alzheimer's Foundation in Chicago. Four members began their 1991-1993 terms: Linda Feinberg and Gail Lahti are Consortia Representatives, Janet Mixter is a Resource Library Representative, and Trudy Gardner was re-elected to her position as a Non-Aligned Library Representative.

The Consortia Representatives accepted liaison assignments for 1991 and will report on their communications with these consortia at each Council meeting. We hope that each Consortium's Coordinator will include this liaison on its mailing list for newsletters and meeting announcements, and will advise the liaison of any important local news--particularly a change in Coordinators! The Council is now maintaining the list of Coordinators and sees that it is published in the **HSLI NEWSLETTER** at least annually, or as changes are made. Consortia and their liaison representatives are as follows:

Areawide Consortium	Roy Jones
Capital Area Consortium	Linda Feinberg
Chicago & South Consortium	Gail Lahti
East Central Illinois Library Consortium	Priscilla Swatos
Fox Valley Consortium	Gail Lahti
Heart of Illinois Library Consortium	Roy Jones
*Illinois Health Library Consortium	Priscilla Swatos
Metropolitan Library Consortium	Gerald Dujsik
*Northeastern Illinois Library Consortium	Gerald Dujsik
Quad City Area Biomedical Consortium	Priscilla Swatos
*Shabonna Library Consortium	Priscilla Swatos
Upstate Library Consortium	Nancy Dale
West Central Consortium	Linda Feinberg

*Last year's Council representatives reported these groups may actually be defunct. P. Swatos will follow-up and report to Council in July.

Suzanne Schriar of the State Library's ILLINET Office, reported there are now 124 health science libraries in SILO. These libraries' holdings will be in a May 1991 edition of the **HSLI/SILO SERIALS UNION LIST**, purchased by the State Library. New libraries to be included for the first time in the SILO list are:

Alfred Adler Institute	Memorial Hospital, Carthage
American Dental Association	Mercy Hospital, Chicago
Children's Memorial Hosp., Chicago	Univ. Chicago-John Crerar Library
Cook County Hospital	Univ. Illinois-Lib of the Health Sciences
Franciscan Med. Cen., Rock Island	VA Hospital--Chicago
Freeport Memorial Hospital	VA Hospital--Danville
Good Samaritan Hosp., Mt. Vernon	

As in past years, the state will purchase a single copy and then print an additional fifty copies, which will be sent to all ILLINET system headquarters, all health science Consortium Coordinators, and to the Council's Resource and Non-Aligned Representatives. These people will have the responsibility to distribute the list for copy purposes to all their constituents, on a cost-recovery basis. Some of these consortia and systems will, no doubt, organize group copy orders. Others will simply route the existing copy for members to re-copy for their own use. The new edition will run nearly 1500 pages and will be available in June or July.

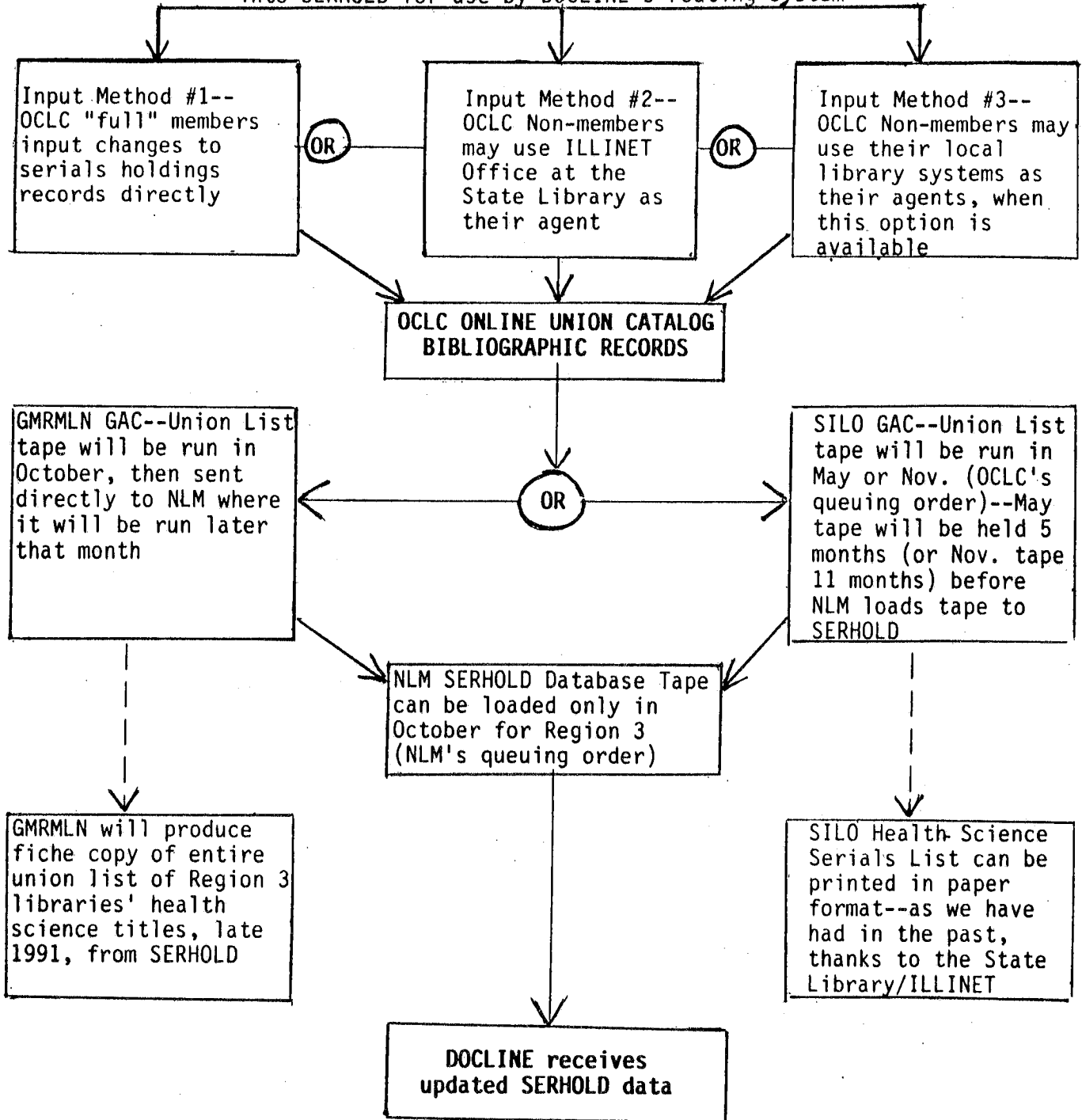
The OCLC SILO/GMRMLN Union Lists and their overlap in tape-run dates were discussed at length. Because NLM has set October as the annual update time for all Region 3 libraries' SERHOLD files, our current May-or-November SILO tape dates are always going to be out-of-date. Council voted to recommend that all HSLI institutional members participate in the GMRMLN Union List to assure the most current SERHOLD schedule for DOCLINE. Under this proposal, libraries would pay profiling fees and start-up costs of less than \$90 the first year. Succeeding years the cost is \$5 plus a share of the tape. SILO would continue to be our state-wide resource, with paper copies of the HSLI/SILO list as appropriate. The OCLC Online Union Catalog will continue to be updated via our SILO agents at the State Library or in the library system headquarters. A mailing detailing this proposal was sent to all HSLI institutional members in an effort to meet the GMRMLN deadline of June 28 (extended from June 14 for the benefit of our members) for requesting profiling in the GMRMLN Union List for 1991. Parts of that mailing are included in this issue in the hope that as many librarians as possible will read and respond to its important recommendation. We need to have SERHOLD data for all Illinois libraries be as current as possible to obtain the greatest benefit of DOCLINE's routing tables. Please call your Council liaison or any other Council member if this issue is confusing or unclear in any matter. We need the support and participation of every Illinois health science library in this move to participate in the GMRMLN Union List. If your questions focus on OCLC/Selective User status, contact Suzanne Schriar at the State Library (217--785-1532).

Council members will be meeting July 19 in the Chicago area (site not selected). All meetings are open. Contact Priscilla Swatos for lunch reservations (309-792-4360). We will be discussing the ILLINET Fax Protocol, which will be under review in the fall, and trying to determine how to represent the interests of HSLI libraries. Are any of you sufficiently upset/concerned with the protocol **today** who would like to survey the members to identify their concerns and report to the Council on problems reported by libraries relating to the Protocol? I will be pleased to accept volunteers for a committee to evaluate common concerns of our members, **if the interest is there**. Also on the agenda for that meeting will be a discussion of the planned arrival of LOANSOME DOC in our region by the Fall. Thanks to all the members who responded to my request for a list of concerns/questions before the April 19 meeting I attended. My message to GMRMLN emphasized the need for education and explanation--based on the number of responses which asked me to define LOANSOME DOC! I will not go into that meeting yet, because the program's procedures for our region are still very much up in the air. Better we discuss a program that **will** exist! And finally, on our agenda will be recommendations from the newly-selected headquarters for our Region for the next five years--the University of Illinois Library of the Health Sciences was re-awarded the GMRMLN contract! This is good news for us, and I know there are exciting plans for the future in our area as a result of this contract settlement.

SERHOLD UPDATE METHODS FOR ILLINOIS LIBRARIES

UPDATING SERIAL HOLDINGS RECORDS FOR OCLC, WHICH WILL...

- . provide OCLC serials records for SILO Union List and/or GMRMLN Union List
- . allow production of state-wide listings of health science journal holdings, such as our HSLI Serials Union List
- . allow possibility for other print, fiche, or tape lists--all via individual arrangements with OCLC
- . provide tape of current serials data to be loaded into SERHOLD for use by DOCLINE's routing system





GREATER MIDWEST REGIONAL MEDICAL LIBRARY NETWORK

Management Office

Library of the Health Sciences University of Illinois at Chicago
1750 West Polk Street Chicago, Illinois 60612 Phone 312 996-2464

Mailing Address:

P. O. Box 7509 Chicago, Illinois 60680
Telex: 20 6243

OTHER AGENCY COST WORKSHEET

LIBRARIES MAINTAINING SERIALS DATA FOR SERHOLD
VIA OCLC THROUGH ANOTHER AGENCY AND
WISH TO BE INCLUDED IN THE GMRMLN ULS

Libraries that wish to maintain their serial holdings on OCLC through another agency, but wish to be included on the GMRMLN tape to NLM should use the following rates:

COST	Entry Year Full OCLC Member	Entry Year Non-Full OCLC Member	Annual Maintenance***
Profiling*			
Group profiling for GMRMLN ULS	40.00	40.00	0
Network profiling	9.25	9.25	0
GMRMLN	5.00	5.00	5.00
Start-Up fee (First year only)			
Full OCLC member @ \$17	17.00		
Non-Full OCLC member @ \$35		35.00	
GMRMLN tape for SERHOLD:**			
The total cost of the tape is divided by the total number of libraries on the tape.	_____	_____	_____
TOTAL	\$ _____	\$ _____	\$ _____

NOTES:

- * Profiling for GMRMLN ULS is charged the first year a library enters the GMRMLN ULS.
- ** The cost for the tape will be determined when the tape is run. Your library's portion of the tape charges will be added to your next bill.
- *** Annual maintenance (all libraries) BEGINS January 1 following the library's entry year.
- OCLC will send the 1990 Region 3 (GMRMLN) Update to NLM in February 1991, due to the tape transfer of NLM's Region 3 (selected libraries) serial holdings to OCLC. In 1991, and annually thereafter, the tapeload will be scheduled for October 1.

DEADLINE: FRIDAY, JUNE 28, 1991, 5 p.m.

SUBMIT THIS FORM TO MANAGEMENT OFFICE TO BE INCLUDED IN 1991 GMRMLN U.L. SERHOLD TAPE

1991 CALENDAR FOR GMRMLN UNION LIST

JUNE 28, 1991, 5 p.m.

1991 deadline for receipt of requests to be profiled for GMRMLN Union List. Yellow form included in this mailing must be submitted to the GMRMLN Management Office in Chicago by this time for your library's holdings to be included in October 1991 GMRMLN Union List tape run.

AUGUST 31, 1991

Deadline for receipt of update information for serials holdings by the BCR office for non-Illinois libraries. Contact **your** agent (local library system or Suzanne Schriar at the ILLINET Office) to obtain the date by which **you** must provide data to them.

SEPTEMBER 27, 1991

Last date for OCLC agents to update your serials records **online**.

SEPT. 28 - OCT. 4, 1991

OCLC will run the tape of GMRMLN Union List participants' serials holdings.

OCTOBER 5-31, 1991

GMRMLN-purchased OCLC tape will be loaded into NLM's SERHOLD database. DOCLINE routing system will access that new information when routing ILL's for the next 12 months.

C. BERGER AND COMPANY

The Best Reference For Librarians™

Sometimes A Librarian Needs A Librarian

Every library has staff vacancies, workload crunches or special projects from time to time. They're inevitable. But don't let them stop you.

Call C. Berger and Company. We're professional librarians specializing in:

- Professional and clerical library temporaries*
- Nationwide executive searches
- Complete project management services
- Loose-leaf collection updating*
- Information management consulting

We'll do whatever it takes to get the job done, quickly, professionally and courteously. After all, who understands a librarian better than another librarian? Call or write us today for details.

(708) 653-1115
Box 274, Wheaton, IL 60189

*These services available in
Illinois, Indiana and Wisconsin only

EBSCO is serials service for medical libraries.

EBSCO believes in providing the best in serials service to our medical and health science library customers. So we've designed our services with you, the medical librarian, in mind. Take a look at just a few of the many benefits you receive when you order through EBSCO:

- Accurate, on-time order placement
- Online claims to major STM publishers
- Customized serials management reports
- Invoice information in machine-readable form
- Unique Missing Copy Bank® for Medical Titles
- Interfacing with major automated library systems
- Valuable MEDLINE®/EBSCO CD-ROM products available
- Complete Index Medicus™ Price Study conducted annually

To learn about these and other EBSCO serials services for medical libraries, contact us today. Let us show you what we mean when we say EBSCO is serials service for libraries.



826 South Northwest Highway
Barrington, IL 60010
(Tel) 708-381-2190 • (Fax) 708-381-4018

The Fall 1991 meeting of HSLI will be held on October 24-25, 1991 at the Holiday Inn Crowne Plaza, Lisle. For those of you who know the area, it is at the intersection of Warrenville Road and Naperville Road (3000 Warrenville Road). The telephone number of the Holiday Inn Crowne Plaza is (708)505-1000.

The program is in the process of being finalized. Complete information on the program and registration will be available soon.

If you have any questions about train and/or bus routes to the hotel, please contact Russ Iwami.

Attendees traveling from the Chicago area should be able to utilize the Burlington Northern line to avoid the expected driving aggravations. You may contact Metra at 312-322-6777 for train schedule information or at 312-322-6772 for group travel or charters.

Apparently there are no Pace bus routes which stop directly at the hotel. You may call the hotel at 708-505-1000 and they will send their van to pick you up at the Lisle train station. It is about a 10 minute ride and the van seats up to 15 people.

Persons traveling by airplane can get transportation to the hotel from American Limousine for \$15 per person from O'Hare Airport or \$16 per person from Midway Airport. Call 708-920-8888 to make arrangements.

If you are driving to the hotel, East-West Tollway 88 exits onto Naperville Road just south of the hotel.

The Holiday Inn Crowne Plaza is easy to get to, so start making your plans to be there. Good times, good people and a good education are guaranteed!

These libraries have already been profiled for the GMRMLN Union List:

- American Dental Association
- American Hospital Association
- Chicago College of Osteopathic Medicine
- Children's Memorial Hospital, Chicago
- Good Samaritan Hospital, Mt. Vernon
- Illini Hospital, Silvis
- Loyola University Medical Center, Maywood
- Lutheran General Hospital, Park Ridge
- MacNeal Hospital, Berwyn
- Northwestern University Medical Center
- Resurrection Hospital, Chicago
- Rockford Memorial Hospital
- Rush University, Chicago
- Dr. W. Scholl College of Podiatric Medicine
- SIU School of Medicine, Springfield
- St. Anthony Medical Center, Rockford
- University of Chicago, John Crerar Library
- UHS-Chicago Med. School, North Chicago
- University of Illinois-COM-Chicago
- University of Illinois-COM-Peoria
- University of Illinois-COM-Rockford
- University of Illinois-COM-Urbana

Chicago to Aurora — Monday through Friday

TRAIN NUMBERS

CONNECTING SERVICES	PARKING	ZONES	STATIONS	1201	1287	1289	1297	1203	1205	1207	1209	1211	1213	1215	1217	1219	1221	1223	1225	1227	1229
				AM	AM	AM	AM	AM	AM	AM	AM	PM	PM	PM	PM	PM	PM	PM	PM	PM	PM
Metra, CTA, Amtrak		A	CHICAGO (Union Station)	6:20	6:50	7:10	7:27	7:40	8:45	10:30	12:30	1:30	2:30	3:20	3:55	4:00	4:28	4:34	4:38	4:46	4:52
CTA	a	A	Halsted St.	6:24								1:34	2:34	3:24		4:04	4:32	4:38	4:42		
CTA	a	A	Western Ave.	6:28			7:34	7:47	8:52	10:37	12:37	1:37	2:38	3:28		4:08	4:36	4:42	4:46		
CTA, Pace	b	B	Cicero	6:33				7:52	8:57	10:42	12:42	1:43	2:43	3:33		4:13	4:41	4:47	4:51		
Pace	a	B	Clyde	6:36				7:55	8:59	10:44	12:44	1:45	2:46	3:36					4:54		
Pace	b	B	LaVergne									1:47		3:38					4:58		
Pace	c	B	Berwyn	6:38				7:57	9:01	10:46	12:46	1:49	2:48	3:40		4:17			4:58		
Pace	b	B	Harlem Ave.	6:40				7:59	9:03	10:48	12:48	1:51	2:50	3:42		4:19			5:00		
	b	C	Riverside	6:43				8:01	9:05	10:50	12:50	1:53	2:52	3:45		4:22			5:03		
	a	C	Hollywood (Zoo Stop)							10:52	12:52	1:55	2:54	3:47		4:24			5:05		
Pace	b	C	Brookfield	6:45				8:04	9:08	10:54	12:54	1:57	2:56	3:49		4:26			5:07		
	a	C	Congress Park									1:59		3:51				5:10			
Amtrak, Pace	d	C	LaGrange Rd.	6:48				8:07	9:11	10:57	12:57	2:01	2:58	3:53		4:28		4:58			5:10
	c	C	LaGrange, Stone Ave.	6:50				8:09	9:13	10:59	12:59	2:03	3:01	3:55		4:31		4:59			5:13
Pace	c	D	Western Springs	6:53				8:12	9:15	11:01	1:01	2:05	3:03	3:58		4:34		5:02			5:16
	a	D	Highlands	6:55								2:07		4:00				5:05			
Pace	c	D	Hinsdale	6:57	7:10		7:48	8:15	9:17	11:03	1:03	2:09	3:06	4:02		4:37		5:07			5:20
	b	D	West Hinsdale									2:11		4:04				5:10			
Pace	b	D	Clarendon Hills	7:00				8:18	9:20	11:06	1:06	2:13	3:08	4:06		4:40		5:12			5:23
Pace	c	D	Westmont	7:03	7:15			8:20	9:22	11:08	1:08	2:16	3:12	4:09		4:43		5:15			5:27
	c	E	Downers Grove, Fairview Ave.	7:05				8:22	9:24	11:10	1:10	2:18	3:14	4:11		4:45		5:18			5:31
Pace	d	E	Downers Grove, Main St.	7:07	7:20		7:55	8:24	9:26	11:12	1:12	2:20	3:16	4:13	4:20	4:48	4:58			5:11	
Pace	d	E	Belmont	7:10				8:27	9:29	11:15	1:15	2:23	3:19	4:16	4:24		5:02			5:15	
Pace	e	E	Lisle	7:13				8:30	9:32	11:18	1:18	2:26	3:22	4:19	4:28		5:07			5:20	
Pace, Amtrak	e	F	Naperville	7:18				8:35	9:37	11:23	1:23	2:31	3:28	4:25	4:34		5:13			5:27	



c/o B.S.I.
8157 South Cass Avenue
Darien IL 60559

BULK RATE
U S POSTAGE PAID
WESTMONT IL
PERMIT NO. 652

PE91 *0018365
RHONA S KELLEY
S I U SCHOOL OF MEDICINE
LIBRARY
PO BOX 19231
SPRINGFIELD IL 62794